

## Zenith Radio Corp.

**Model:** 6A229

**Chassis:**

**Year:** Pre August 1939

**Power:**

**Circuit:**

**IF:**

**Tubes:**

**Bands:**

### Resources

**Riders Volume 10 - ZENITH 10-18**

**Riders Volume 10 - ZENITH 10-19**

MODELS 6A203, 6A223, 6A229  
 6A239, 6A241, Chas. 5640AT  
 MODELS 8A232, 8A242, 8A244  
 8A262, Chassis 5804AT

ZENITH RADIO CORP.

Alignment, Socket, Trimmers

CHASSIS 5640, 5804A Secret Volume Governor

Where it is desired to limit the maximum volume of the receiver to a predetermined level such as for hospital use, use in public places, etc., this may be done as follows:

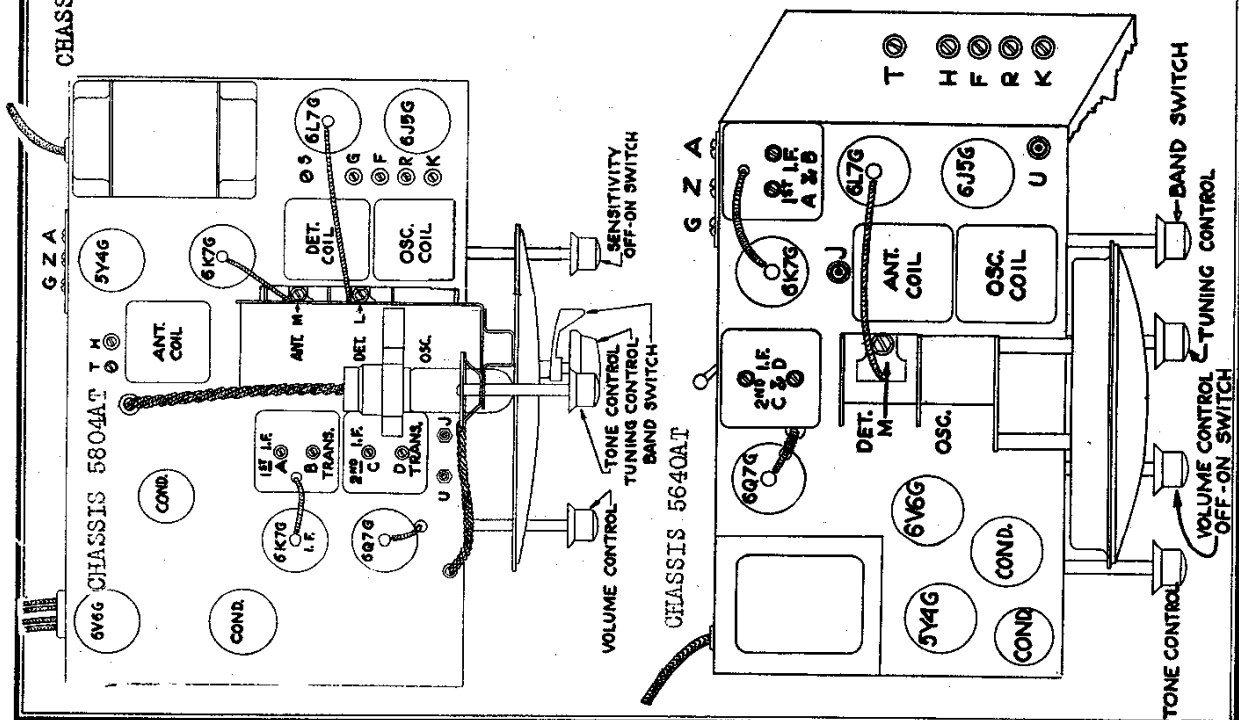
1. Tune the receiver carefully to a local station, and adjust the volume to the loudest desired setting.
2. Remove the knob by pulling directly away from the panel, and insert the short headless screw into the hole provided in the rear of the knob closest to the right side of the elongated cut-out around the volume control shaft.
3. It may be necessary to move the screw to the next hole in either direction before it is definitely determined what volume level is desired.

Alignment Procedure

CHASSIS 5640AT AND 5804AT

Operation	Sig. Gen. Connected to	Dummy	Gen. Freq.	Band Switch	Receiver Dial	Trimmer	Remarks:
1	1st Det. Grid	1/2 mfd	456	Med. Wave	550KC	ABCD	I F Alignment
2	Rec. Ant. Post	400 Ohms	18000	S. W.	18000	K	Set. Osc. To Scale
3	Rec. Ant. Post	400 Ohms	18000	S. W.	18000	L-M	Rock Gang While Adj. for Max. Output
4	Rec. Ant. Post	200 mfd.	1500	Med. Wave	1500	F	Set. Osc. to Scale
5	" "	200 "	1500	" "	1500	G-H	Adjust for Max. Output
6	" "	200 "	550	" "	550	J	Rock Gang while Adjusting for Maximum Output
7	" "	200 "	1500	" "	1500	F-G-H	Repeat 4 & 5
8	" "	200 "	400	L. W.	400	R	Set. Osc. to Scale
9	" "	200 "	400	L. W.	400	S-T	Adjust for Max. Output
10	" "	200 "	166.7	L. W.	166.7	U	Rock Gang While Adjusting for max. Output
11	" "	200 "	400	L. W.	400	R-S-T	Repeat 8 & 9

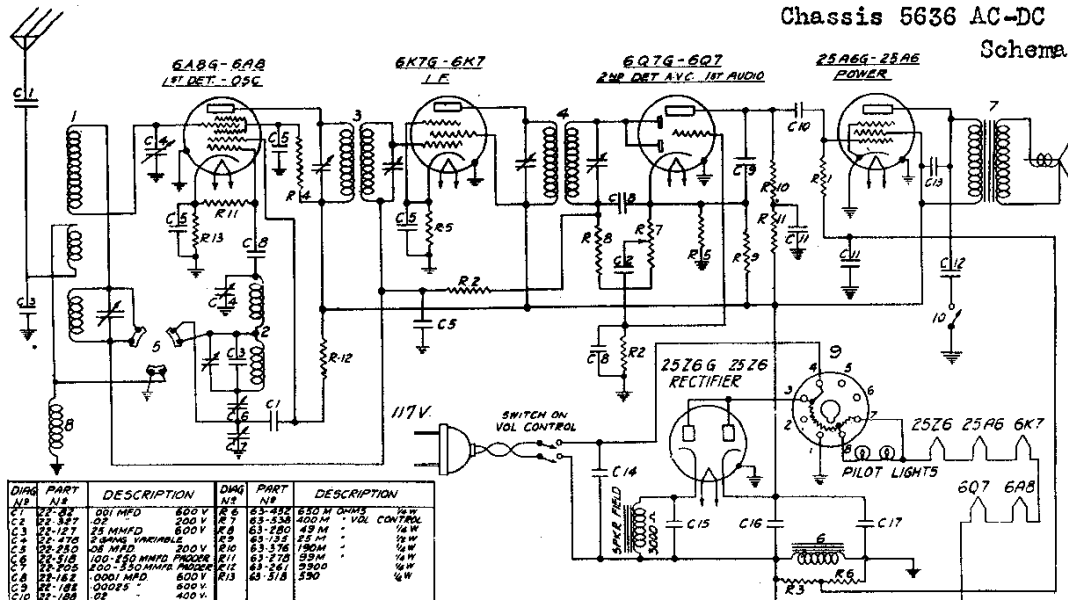
\* MODEL CHASSIS 5804A ONLY



ZENITH RADIO CORP.

MODELS 6A203, 6A223, 6A229  
6A239, 6A241, Ch. 5640AT  
MODELS 6DL120 to 6DL122  
Chassis 5636 AC-DC

Schematics



QTAG NO.	PART NO.	DESCRIPTION	QTAG NO.	PART NO.	DESCRIPTION
C1	22-22	500 MFD 500V	R6	63-292	250 M OHMS 1/2 W
C2	22-22	500 V	R7	63-293	500 OHMS 1/2 W
C3	22-127	25 MMFD 500V	R8	63-290	48 M 1/2 W
C4	22-276	5 OHMS VARIABLE	R9	63-725	250 M 1/2 W
C5	22-280	500 MFD 300V	R10	63-726	150M 1/2 W
C6	22-518	100-250 MMFD PRODS	R11	63-720	50M 1/2 W
C7	22-205	200-350 MMFD PRODS	R12	63-561	500 1/2 W
C8	22-162	500 MFD 500V	R13	63-578	500 1/2 W
C9	22-188	500 MFD 500V			
C10	22-188	500 MFD 500V			
C11	22-190	500 MFD 500V			
C12	22-190	500 MFD 500V			
C13	22-529	500 MFD 500V			
C14	22-485	1200V			
C15	22-517	500 MFD 500V			
C17	22-518	500 MFD 500V			
R1	63-290	250 M OHMS 1/2 W	1	20-144	ANT COIL ASSEMBLY
R2	63-293	500 OHMS 1/2 W	2	20-145	OSC COIL ASSEMBLY
R3	63-281	400M	3	20-378	1ST I.F. TRANS
R4	63-286	15 M	4	20-347	2ND I.F. TRANS
R5	63-362	400	5	63-101	BAND SELECT SWITCH
			6	22-345	POWER CHOKE
			7	20-89	ANTENNA CHOKE
			8	100-1	GALLOTT TUBE (17.1)
			9	63-102	SECTION CANDIDATE
			10		

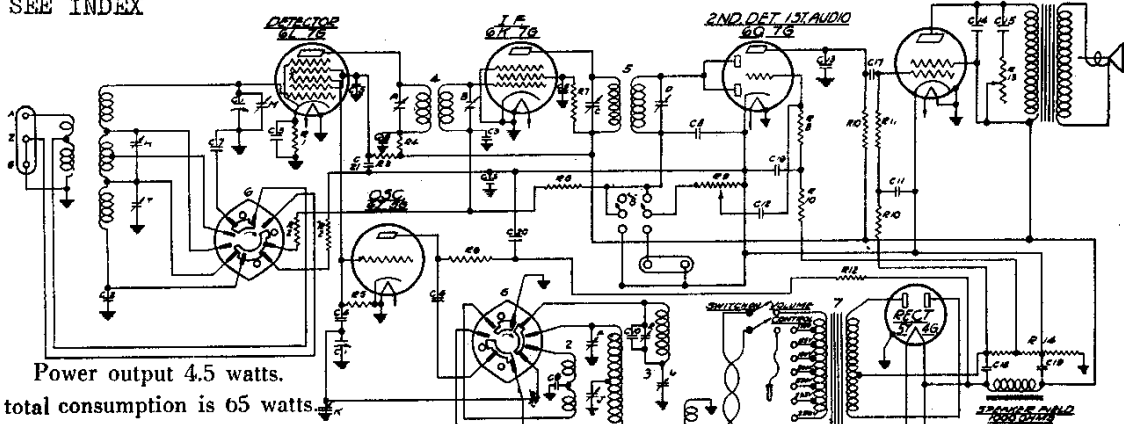
117V. SWITCH ON VOL CONTROL

I.F. FREQUENCY 456 KC  
6 TUBE SUPERHETERODYNE  
CHASSIS NO 5636 AC-DC

ZENITH RADIO CORPORATION  
CHICAGO, ILLINOIS

Power Output 15 watts.  
Current Consumption 44 watts

FOR OTHER DATA  
SEE INDEX



Power output 4.5 watts.  
The total consumption is 65 watts.

QTAG NO.	PART NO.	DESCRIPTION	QTAG NO.	PART NO.	DESCRIPTION
R1	63-290	250 M OHMS 1/2 W	R10	63-720	50M 1/2 W
R2	63-293	500 OHMS 1/2 W	R11	63-726	150M 1/2 W
R3	63-281	400M	R12	63-561	500 1/2 W
R4	63-286	15 M	R13	63-578	500 1/2 W
R5	63-362	400			

MODEL	SPEAKER
6DL120	48-276-8 M
6DL121	48-276-8 M
6DL122	48-276-8 M

QTAG NO.	PART NO.	DESCRIPTION
1	20-144	ANTENNA COIL ASSEMBLY
2	20-145	OSC COIL ASSEMBLY
3	20-378	1ST I.F. TRANS
4	20-347	2ND I.F. TRANS
5	63-101	BAND SELECT SWITCH
6	22-345	POWER CHOKE
7	20-89	ANTENNA CHOKE
8	100-1	GALLOTT TUBE (17.1)
9	63-102	SECTION CANDIDATE

I.F. FREQUENCY 456 KC  
6 TUBE SUPERHETERODYNE  
CHASSIS NO 5640 AT  
3 BAND LONG WAVE

ZENITH RADIO CORPORATION  
CHICAGO, ILLINOIS

BAND	KILOCYCLES
A	411 — 150
B	1538 — 432
C	23077 — 5660